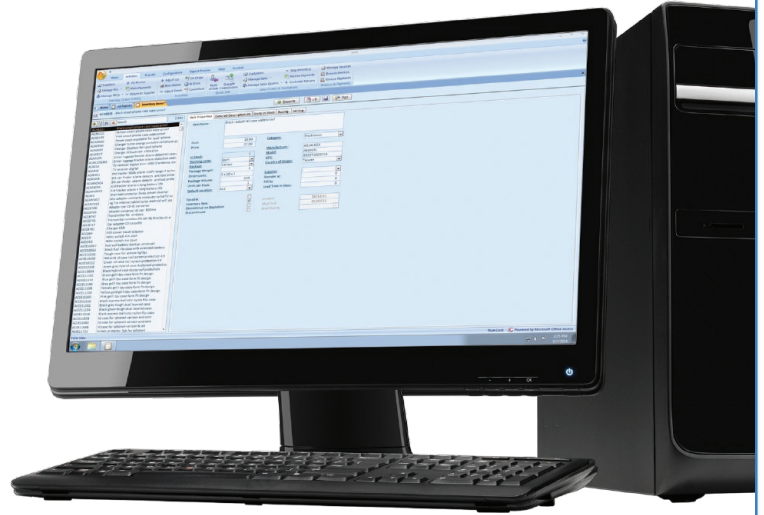




Almyta Systems Small Business Software

Requirements and Limitations

Hardware: **IBM Compatible PCs**
Operating System: **Windows XP SP3 or later**
LAN speed: **100 MBS (Multi-user only)**
Theoretical number of users: **no limit**
Practical number of users: **limited by hardware**
Theoretical number of records: **two billion**
Practical number of records: **a few million**



Standard Functionality

Generic Functions

- Single user
- Multi user
- Multiple companies
- User selectable decimal places for currency
- User selectable decimal places for inventory units
- Password protection
- Screen and report permissions by user or group
- Screens and reports customizations
- Export data to Microsoft Excel, Word, HTML, and text functionality

Purchasing

- Purchase orders for inventory
- Receiving inventory and fixed assets against purchase orders
- Supplier database
- Supplier multiple pickup locations
- Supplier browse and advanced search
- Payment terms and predefined memos
- Support for custom printed purchase order form
- Reports include Low Stock Notification and Inventory to Order
- Copy to New function
- Supplier RMAs

Accounting

- Accounts Receivable
- Accounts Payable
- Sales Invoice Payments
- Supplier Invoice Payments

Inventory Control

- Inventory Item Master List
- Inventory Item Master List filters
- Inventory unit detail

Inventory Control (cont'd.)

- Unit detail filters
- Multiple warehouse locations with a default location
- Inventory direct positive/negative adjustment
- Issue by location, serial number, remarks support
- Internal Inventory Labels with barcodes support
- Barcode scanning at receiving
- Barcode scanning at loading and shipping
- Inventory shipped/used units archives
- Inventory Cost Quotation
- First and second Serial/Lot numbers with full barcode support
- Inventory Categories
- Package Types
- Default suppliers
- In Stock
- Fast browse and advanced Search
- Monthly demand auto-calculation based on historical data
- Numerous reports and barcoded labels
- Inventory Import/Export
- Batch barcode readers support

Sales/Shipping Orders

- Sales/Warehouse Shipping orders for inventory items
- Automatic with suffix/prefix or manual order numbering
- Customer/Contact List
- Customer Multiple destination locations
- Customer multiple sales representatives
- Customer browse and advanced search
- Quotes for outstanding orders
- Invoices for shipped orders
- Payment terms and predefined memos
- Carriers and shipping method lists
- Copy to New function
- Automated invoices for handling and shipping.
- Customer RMAs